

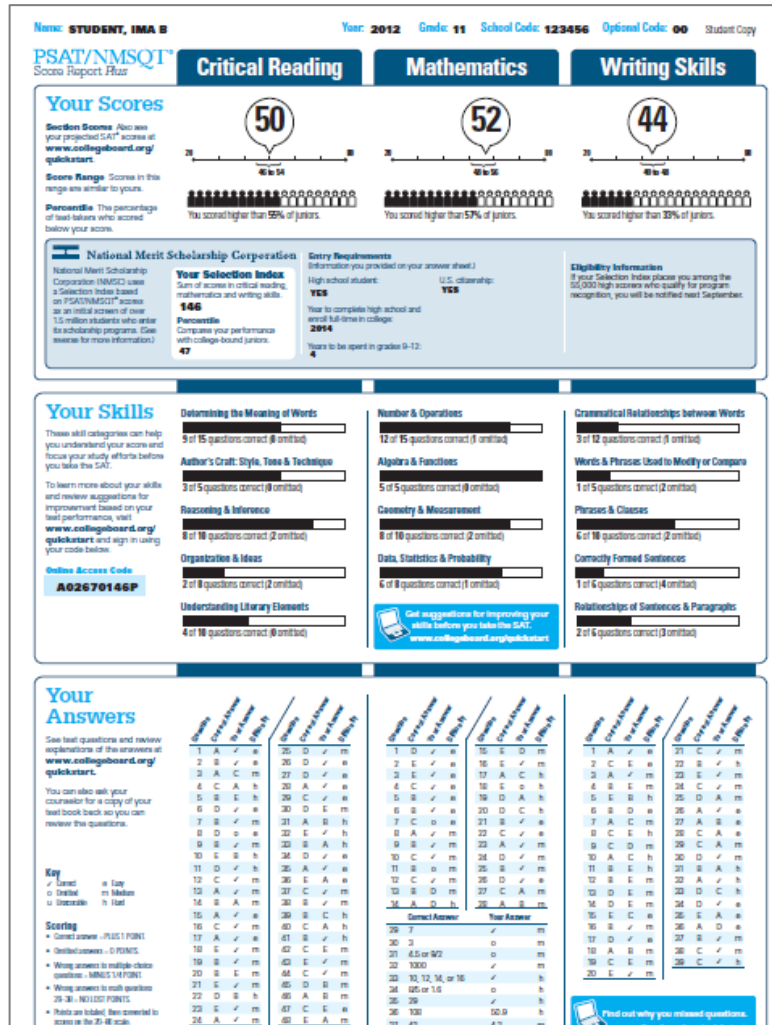
PSAT Results with My College Quickstart

www.collegeboard.org/quickstart

Demo:

[https://quickstart.collegeboard.org/
posweb/loginbyepl.jsp?daun=uvdfgl
sczt](https://quickstart.collegeboard.org/posweb/loginbyepl.jsp?daun=uvdfglsczt)

Find Your Access Code



Next Steps

You've taken a step on the path to college and the future. Here are some things to consider now...

So, you're thinking about:

Sport/Fitness Administration

Learn more and see your full results
www.collegeboard.org/quickstart

Your access code **A02670146P**

SAT The PSAT/NMSQT is a great way to get ready for the SAT. The best time to take the SAT is spring of junior year. Register and practice at sat.org.

AP Congratulations, your scores show that you have potential for success in at least one AP course! Log in to see your full report. AP classes bring college to high school to help you get ahead.

If You're Logging into My College QuickStart for the First Time:

1 Enter Your Online Access Code

Your [Online Access Code](#) is printed on your PSAT/NMSQT paper score report.

2 Sign into Your College Board Account

Sign In

[Forgot your username?](#)
[Forgot your password?](#)

or Sign Up Now

If you don't have an account you can create one now. It's free!

Sign Up

If You've Logged into My College QuickStart Before:

1 Sign into Your College Board Account

Sign In

[Forgot your username?](#)
[Forgot your password?](#)

Does anyone already have a CollegeBoard account?

If not, type in your Access Code at #1 at the top of the screen. Then, click on "Sign Up" under #2.

If you have a CB account, sign in here.

Step 1: Enter Student Information



This info will be used to create your official College Board student record and to customize services. You cannot change your name online once you start any SAT® or PSAT/NMSQT® activities.

Student's First Name:*

Middle Initial:

Student's Last Name:*

Gender:* Male Female

ZIP/Postal Code:* Outside U.S.

Date of Birth:* Select Month Day Year: YYYY

High School Graduation:* Select Month Year: YYYY

Student's Email Address:*

Confirm Student's Email:*

Why Your Email Address Is Important

Email is a vital communication link between students and the College Board. The address you enter is where we will send SAT admission tickets, password reminders, student newsletters, and critical alerts.

Monthly Student Newsletter & Alerts

Stay on track with deadline reminders and strategies that help you find, choose, get into, and afford the best college for you -- customized to your grade level. [Learn more.](#)

The Official SAT Question of the Day™

Get an official SAT question delivered to your email inbox for free. [Learn more.](#)

Step 2: Enter Parent Information



Want to bring a parent into the loop? Opt to CC a parent or guardian on important emails you receive and invite them to get newsletters. Your parent must consent to receiving emails before we will send anything. A parent will not have access to this account unless you share your user name and password.

Parent's First Name:

Parent's Last Name:

Parent's Email Address:

Confirm Parent's Email:



Optional

CC a Parent Email Service

Check this box and we'll send a parent copies of important emails you receive from the College Board, such as SAT registration receipts. To keep your information secure, you can link only one other person to your account. The CC emails may contain sensitive information about you and your testing record. [Learn more.](#)

Parent Newsletter & Alerts

This newsletter helps your parent(s) stay on top of what your family should be doing and when to get ready for college, with advice especially for parents and customized by grade level. [Learn more.](#)

The Official SAT Question of the Day™

Get an official SAT question delivered to a parent's email inbox for free. [Learn more.](#)

Step 3: Choose a User Name and Password



Choose a user name and a password that are easy to remember. You will be asked your security question if you forget your password or call customer service for account help.

User Name:*

Password:*

Confirm Password:*

Choose a Security Question:*

Answer the Question:*

Your user name must

- be between 6-15 characters.

Your password must

- be between 7-15 characters and
- contain at least one number (0-9).

[How to create a secure password](#)

Note: This will be your CB user name and password when you register for the SAT.

We recommend entering this info in your phone today.

Recommended password: initials and your Penn ID # (ab632188)

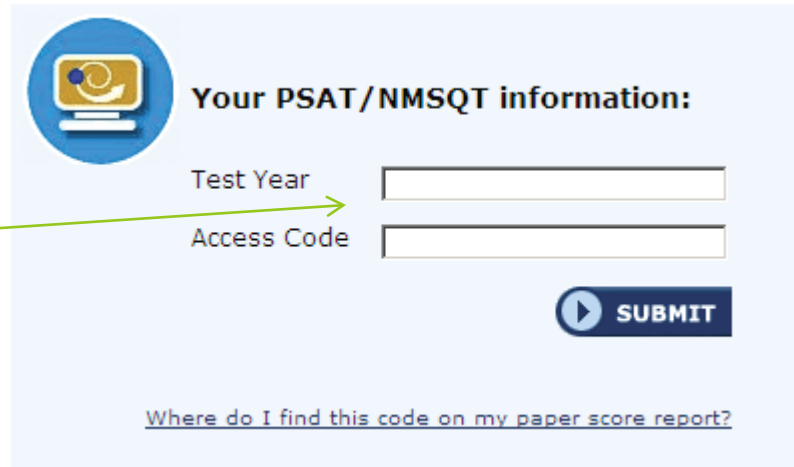
Tell Us about Yourself

Who is completing this sign-up form?*

The College Board is dedicated to protecting your privacy and handling any personal information we obtain from you with care and respect. By submitting this information, you are accepting the [Site Terms and Conditions](#) and [Privacy Policy](#) governing collegeboard.com.

Next, check the boxes if your information is correct. Then you should see:

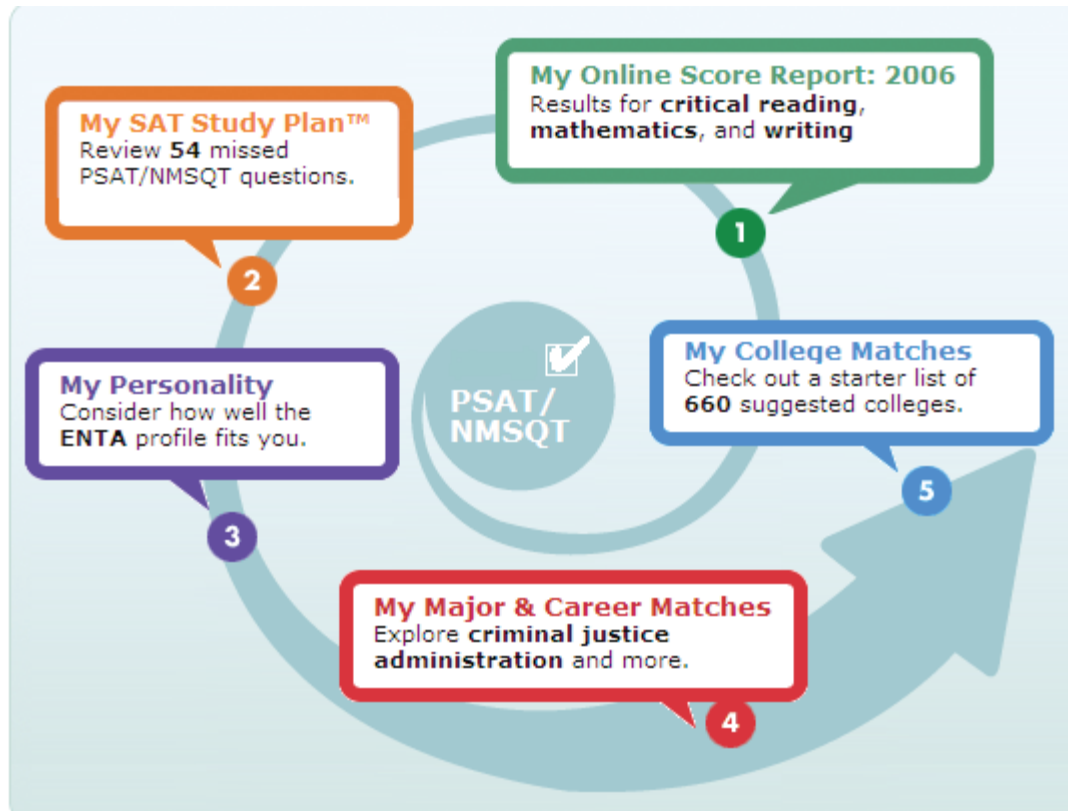
This box should be populated with “2013” & your Access Code.



The screenshot shows a light blue rectangular box containing a form. On the left side of the box is a circular icon with a blue background and a yellow computer monitor displaying a smiley face. To the right of the icon is the text "Your PSAT/NMSQT information:". Below this text are two input fields. The first field is labeled "Test Year" and the second is labeled "Access Code". A green arrow points from the text "This box should be populated with '2013' & your Access Code." to the "Test Year" input field. To the right of the input fields is a dark blue button with a white play icon and the word "SUBMIT" in white capital letters. At the bottom of the box, there is a link that reads "Where do I find this code on my paper score report?"

If correct, submit.

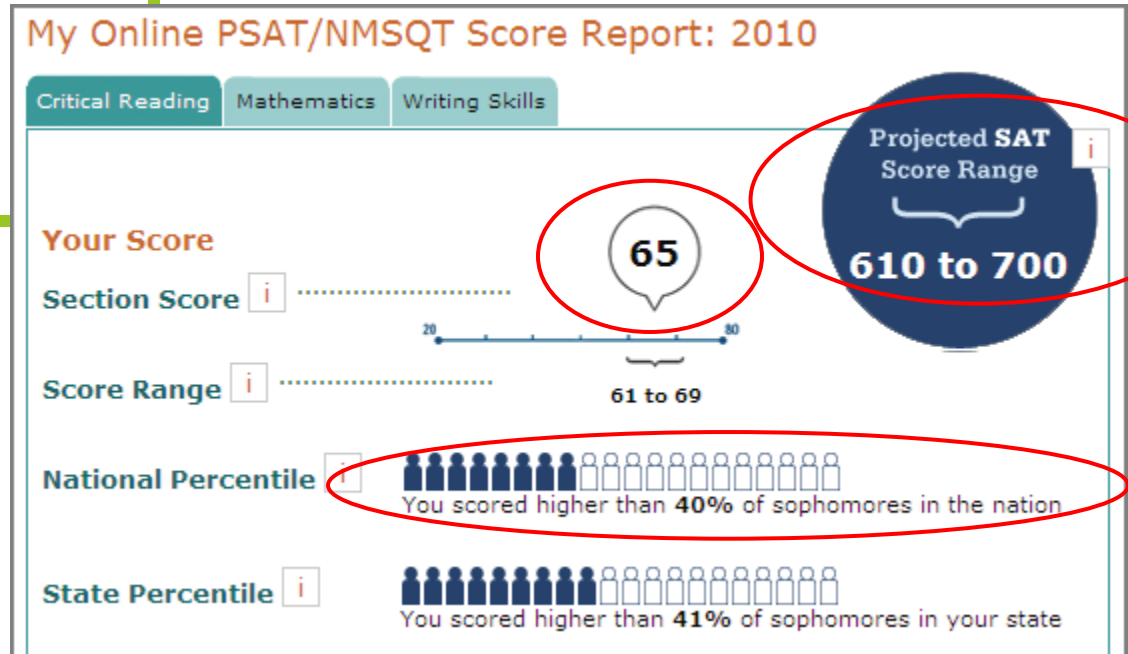
My College QuickStart Home Page



My College QuickStart

My Online Score Report

- Projected SAT® score ranges for all 3 subjects
- State percentiles
- You can filter questions
- Questions and answer explanations



YOUR SKILLS

Focus your review by looking at the questions linked to the skill you performed the worst on. Click on an individual skill to see the definition and a list of the test questions that measure that skill.

Your Skills **Your Answers**

These results help you identify the skills you need to work on to improve your college readiness and your SAT score. Select a skill with a lower performance bar and review the questions you answered incorrectly. Then try the question again and read the answer explanations.

expand all | collapse all

Skill	Total Questions	Total Correct	Performance
▶ Algebra & Functions	14	13	<div style="width: 93%;"></div>
▶ Problem Solving*	9	8	<div style="width: 89%;"></div>
▶ Communication*	8	7	<div style="width: 88%;"></div>
▶ Representation*	8	7	<div style="width: 88%;"></div>
▶ Geometry & Measurement	11	8	<div style="width: 73%;"></div>
▶ Number & Operations	9	6	<div style="width: 67%;"></div>
▶ Reasoning*	7	4	<div style="width: 57%;"></div>
▶ Connections*	6	3	<div style="width: 50%;"></div>
▶ Data, Statistics & Probability	4	2	<div style="width: 50%;"></div>

▼ **Geometry & Measurement** 11 8

definition	answers	#	questions
Solve problems based on understanding the properties of shapes, such as triangles and circles, and the spatial relationships between angles and lines.	Omitted	3	03 , 13 , 38 (view all)
	Incorrect	6	--
	Correct	8	08 , 11 , 15 , 18 , 21 , 25 , 31 , 33 (view all)

Next Steps: [Practice and improve](#)

Click on an incorrect question...



Reread the question, the answer choices, and the reading passages, if applicable.

Then click on **Show Answer** and/or **Show Answer Explanation**.

Question you answered incorrectly

Reading: Question 1

Question

Composer Bernard Rands appears to be indefatigable, able to function well with only four hours of ----- .

- (A) performance
- (B) practice
- (C) sleep
- (D) exercise
- (E) exhaustion

Show answer

▶ Show answer explanation

In the **Your Answers** tab, use the filter options to view questions to [investigate](#) further.

Your Skills **Your Answers**

Filter your answers by

-- skills --

easy

correct answers (✓) incorrect answers omitted

Submit

My College QuickStart

My AP Potential

- List of AP courses
- Which ones are offered at your school

Review 34 missed PSAT/NMSQT questions.

My Personality
Consider how well the **ENTA** profile fits you.

My Major & Career Matches
Explore **math & statistics** and more.

My College Matches
Check out a starter list of **109** suggested colleges.

Online Score Report: 2012
for **critical reading, mathematics, and writing**

...ning kit, Ima.

...s with My College QuickStart.

Help ?

Ima Student

pujamshr00@gmail.com

[Update My Info](#) | [Sign Out](#)

My AP Potential

Learn more about your AP Potential and see which AP Courses are the best fit for you.

[View Your Potential](#)

Your Past PSAT/NMSQT Tests

- [2011](#)
- [2010](#)
- [2006](#)

My College QuickStart

My AP Potential

- Choose a major to see which courses match it.
- Interpret your report to see whether you are ready to take a course.

...ial

...s report to see your potential for AP courses based on your scores. AP cou [more...](#)

the full list of courses
...ave potential for AP courses that aren't currently on your radar.

oser look
...ur list to see courses related to the college majors that interest you. [Learn](#) more about each course and how it can help you succeed in college.

3 Talk to your school counselor and teachers
They can help you decide the best course for you!

Please Select A Major

AP Courses	Potential	Matches Major	Your School Offered This Course
Psychology			✓
Art History			✓
Calculus BC			✓
English Language			✓
European History			✓

Ima Student
pujamshr00@gmail.com
[Update My Info](#) | [Sign Out](#)

Interpret your report

Potential

Your scores show that you have the potential for success in this course. Speak with your school coun [more...](#)

Some Potential

Your scores show that you have some potential for success in this AP course. Having interest in the [more...](#)

Potential Not Yet Indicated

Your scores show that you may need more preparation and support to be successful in AP. Share your g [more...](#)

What is AP?

My College QuickStart

My SAT Study Plan™

- Personalized skills to improve
- SAT practice questions
- An official SAT practice test

My SAT Study Plan™

[Study Plan Home](#) [Meet the SAT](#) [Critical Reading](#) [Mathematics](#) [Writing](#) [Practice Test](#)

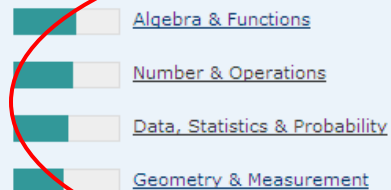
[Review & Practice](#) [My Skills Feedback](#) [Get Test-Taking Advice](#)

My Skills Feedback

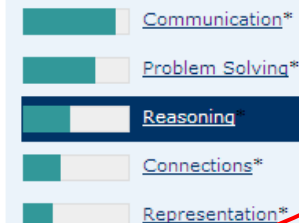
This feedback was created especially for you, based on your PSAT/NMSQT results.

1. Select a skill with a lower performance bar and review the test questions you answered incorrectly. Then try the question again and read the answer explanations.
2. If you find the practice questions too easy, you're probably ready for the next harder level. If you find them too hard, try the next easier level.

Content Skills



Process Skills



* These math-only process skill groups were not included on your Score Report *Plus*.

Skill Group: Reasoning

3 of 7 correct (1 omitted)

Definition	Answers	#	Questions
Develop and use mathematical arguments and proofs to explore the truth of conjectures and justify conclusions.	Omitted	1	37 (view all)
	Incorrect	3	16, 26, 35 (view all)
	Correct	3	10, 22, 32 (view all)

Practice Now

Skills **too easy**? [Try some harder practice questions](#)

Skills **too hard**? [Try some easier practice questions](#)